

GREEN BUILDER® MEDIA PRESENTS

---



# TRANSCEND

HOME EVOLVED



---

POWERED BY DVELE

# Introducing the first Green Builder® branded prefab home: Transcend!



**TRANSCEND**  
HOME EVOLVED

**GREEN BUILDER®**



# Now is the time. This is the home.

Green Builder Media has been trying to find a partner that has a blend of cutting edge technology, extreme sustainability, and the ability to effectively solve for one of the biggest problems that plagues the prefab sector: scalability.

**WE HAVE FINALLY FOUND A COMPANY THAT HAS THAT RIGHT BLEND: DVELE.**

We have joined forces with Dvele to develop Transcend, a completely sustainable, Green Builder branded prefab home that has the potential to transform the housing industry.

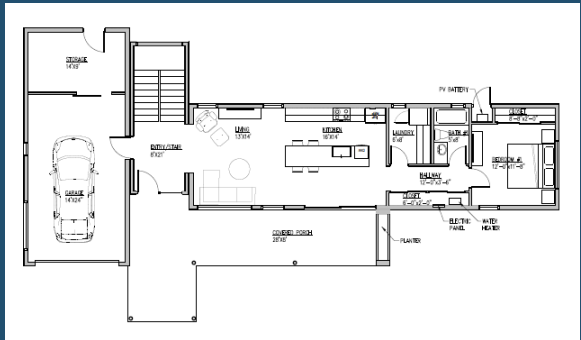
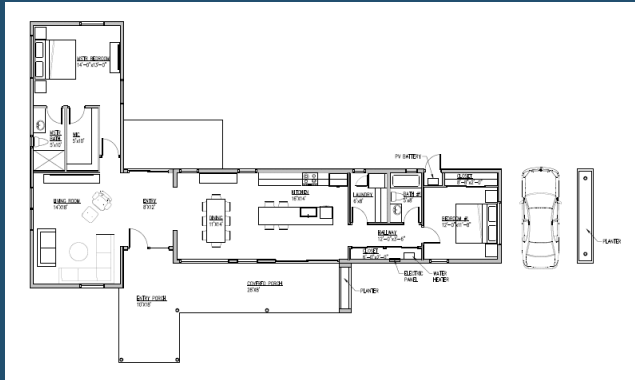
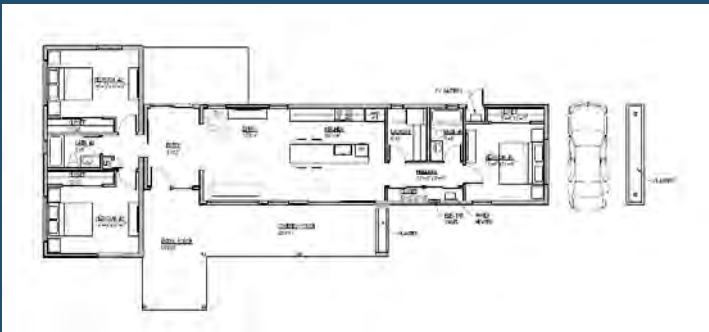
Transcend is fully electrified, solar powered, self learning, high performance, healthy, resilient, and cost effective , and it can be manufactured, delivered and installed onsite in under 6 months.



# The Transcend Series

Using **THREE BASE MODULES**, the Transcend Series is infinitely configurable based on homebuyers' lifestyle needs, lot sizes, climate zones, and preferences.





Flexible Lifestyle-Focused Floorplans



## Homes for the Next Generation

**MODERN, SOPHISTICATED, AND SUSTAINABLE, TRANSCEND IS UNLIKE ANYTHING ELSE AVAILABLE ON THE MARKET TODAY!**

We reimagined the future of housing, **incorporating innovative sustainable design, building science best practices, and cutting-edge products and technologies** to exceed the demands of today's homebuyer.

Not only does Transcend carry the authenticity, credibility, and goodwill of the Green Builder Media brand, it is powered by Dvele's proprietary intelligent-living technology and designed with extreme efficiency, health and wellness, total comfort, and ultra resiliency in mind.

We are selecting products and materials that reduce its carbon footprint while enhancing livability and comfort.

- Dvele's precise prefab manufacturing process reduces waste, ensures quality control, and solves for in-field installation issues and labor challenges.
- Electric trucks will be used to transport Transcend homes to further reduce carbon emissions.
- Green Builder Media is tapping into our extensive database of building professionals to develop with Dvele a national network of contractors who are certified to install Transcend homes onsite, offering buyers a uniquely streamlined experience, from design to move in.

# An Idea Whose Time Has Come

U.S. demand for prefabricated housing is forecasted to climb 2.6% per year to 145,300 units in 2024, with value demand reaching \$10.8 billion.

Growth is being spurred by low interest rates, surging demand, labor and material shortages, soaring lumber prices, and increasing demand for shorter turnaround times and controllable construction schedules (which is particularly relevant when rebuilding after a disaster.)

Over the past several years, **Green Builder Media** has developed a solid pipeline of builders, developers, and consumers who have indicated strong purchase interest in sustainable, efficient, healthy prefab homes.



## 10x

HEALTHIER

Healthier air, water and reduction of contaminants

## 12x

MORE EFFICIENT

Control over environment via reduction air leakage

## ∞x

INTELLIGENT

Embedded sensors and smart systems: data based services

**DVELE** CUSTOMIZE YOUR HOME SEAMLESS PROCESS AN UNPARALLELED CHOICE

ACCOUNT INFORMATION

## CUSTOMIZE YOUR DVELE HOME

In less than 10 minutes, you can download a customized lookbook for the Dvele Home of your choice including: exterior and interior finishing choices, floor plans, features, and an estimated budget for the home including installation

### Let's Get Started

Please provide your contact information so we can save your progress and your lookbooks.

FIRST NAME

LAST NAME

PHONE

EMAIL ADDRESS \*

STATE / PROVINCE \*

It's okay to email me information about my project and Dvele.

SAVE / NEXT

## Innovative Online Buying Process

94% of prospective buyers now use technology to search for homes and a growing number of homebuyers are willing to purchase a home sight unseen.

Green Builder Media and Dvele are taking advantage of this digital revolution in the building industry, offering an advanced technology configurator that enables homebuyers to select their designs, product specifications, and color preferences.

As a part of the homebuying process, we offer suggestions for specific design choices as well as products, systems, and technologies based on climate zones and lot orientation.

We are also generating an extensive set of digital assets to enhance the homebuying process, including 3D home tours, educational videos, "How To" content, widespread social media postings, FAQs, and other online tools.



# Ultimate Performance

TRANSCEND IS HEALTHY, SCIENCE BASED, AND PERFORMANCE DRIVEN.

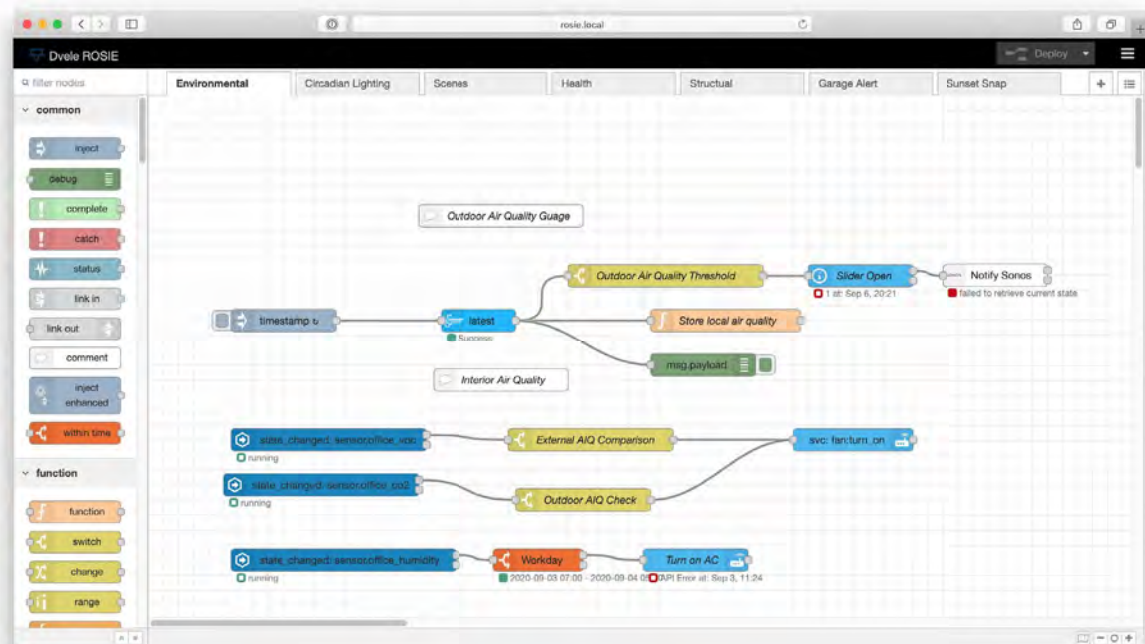
- **Net Zero and All Electric:** The most advanced building science practices have been deployed when designing Transcend to create a superior building envelope that optimizes energy performance, manages moisture and air infiltration, and enables consistent comfort throughout the home. Heat pump air and water heating/cooling technology, solar + storage, high performance lighting, induction cooktops, and other systems will be used to ensure the home is both net zero and all electric.
- **Healthy:** By utilizing materials that are healthy, non toxic, and non polluting, we have eliminated VOCs, formaldehyde, particulate matter (PM2.5, PM10), mold, and other toxins to ensure good indoor air quality and enhance occupant health. Fresh air will be brought in from the outdoors, filtered, and distributed to the living spaces and sleeping locations throughout the home. Air is extracted from rooms that produce moisture and odors: kitchens, bathrooms, laundry, and hobby rooms.
- **Resilient:** Transcend is built with light gauge steel as well as cladding and sheathing materials to boost its ability to withstand superstorms, wildfire, flooding, high winds, and other extreme events that nature may throw its way.



# Intelligent Living

TRANSCEND IS DRIVEN BY ADVANCED SMART HOME TECHNOLOGY THAT ALLOWS IT TO BE:

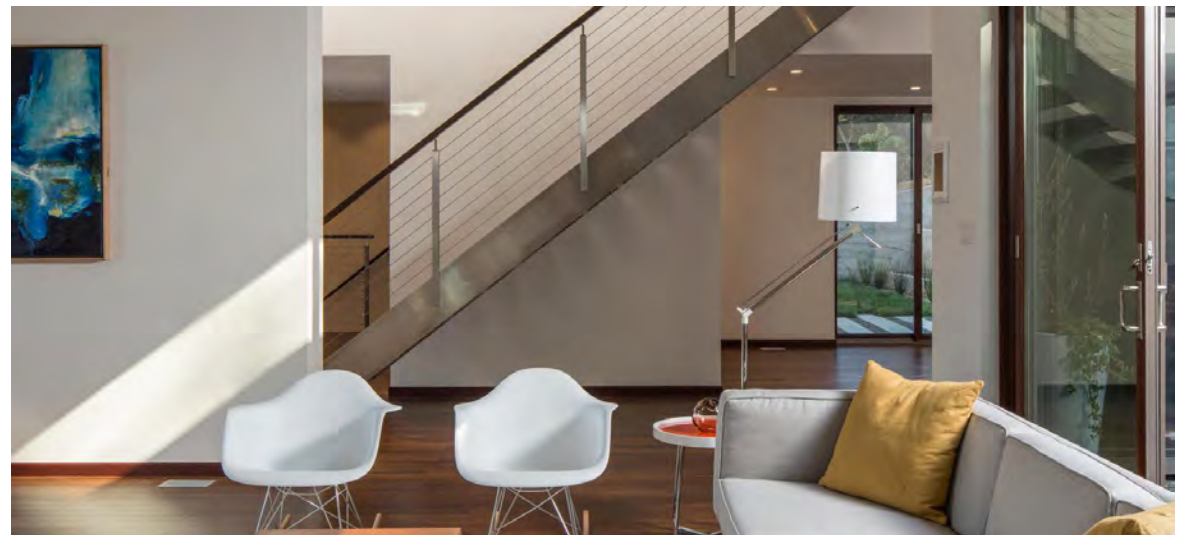
- **Responsive:** Nearly all smart home systems today are reactive to their occupants, whether it is a tactile push of a switch or a voice command. Transcend learns through multiple control interfaces to predict, change, and suggest routines, taking human error out of the equation to optimize efficiency, enhance comfort, and lower the cost of ownership.
- **Intelligent:** Transcend learns occupant behavior by using multiple sensors and control interfaces, offering complete usage and outcome reporting. Intelligence is learning, not just responding to commands.
- **Integrated:** Transcend features a single, integrated, and easily programmable interface that connects all of the smart products and mechanical systems, including HVAC, water heater, IAQ sensors, leak detection and water management, lights, speakers, and more.



# Optimized Wellbeing

## TO OPTIMIZE OCCUPANT WELLBEING, TRANSCEND FEATURES:

- **Biophilic Design:** Using nature as our guide, Transcend homes feel balanced, natural, and calming, with a connection between the indoors and outdoors.
- **Whole Home Water Management:** Water filters are used throughout the home to deliver clean, pure water for drinking, cooking, and bathing. Leak detection and water management devices learn occupants' water footprint and drive conservation. Low flow fixtures are used throughout the home, and water harvesting systems are offered as an upgrade.
- **Acoustic Comfort:** Sound attenuating materials and quiet HVAC systems and appliances control unwanted noise within the home.
- **Circadian Rhythm Lighting:** Cutting edge, super efficient circadian lighting ensures that occupants' body clocks match the time of the day and season of the year. Circadian lighting has been proven to enhance sleep patterns, mood, alertness, productivity, and cognitive function.
- **Safety, Security and Privacy:** Combustion free appliances, induction cooktops, tempered windows, security technology, and data privacy will be used to augment safety and comfort.
- **Sanctuary:** Especially important in the time of COVID, this home has been designed to be a place of tranquility and peace.





## Low Impact Living

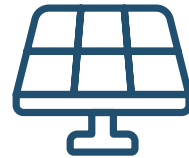
### POWER UP!

Transcend is self powered and regenerative.

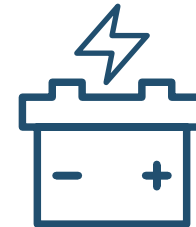
In addition to significant material waste reduction during the production process and the resource efficiencies that are standard with each of these homes, we're helping to reforest our planet for future generations.



ULTRA-EFFICIENT HOME PERFORMANCE



SOLAR POWER



BATTERY STORAGE



SELF-POWERED HOME



1 HOME



10K TREES PLANTED



**The first Transcend home will be located in the stunning San Juan mountains of Colorado.**



**SARA GUTTERMAN**

CEO, Green Builder Media  
sara.gutterman@greenbuildermedia.com  
303-246-8890

**CRAIG COALE**

Publisher, Green Builder Media  
craig.coale@greenbuildermedia.com  
512-344-9754

Green Builder Media is the North America's leading media company focused on green building and sustainable living, affecting positive change by providing inspirational information to over 200,000 progressive building professionals and millions of early adopter and first mover consumers who are interested in sustainable living.

Green Builder Media generates the most innovative, award-winning editorial available in the market today, including breaking news, prominent market research, original insights and visionary thought pieces. With a comprehensive suite of content marketing, digital, social, and print media options, high-profile demonstration projects, market intelligence and data services, and live events, Green Builder Media offers a blend of visionary and practical information covering a broad spectrum of sustainable living topics, including Internet of Things, smart home technologies, energy efficiency, intelligent water, indoor air quality, resilient housing, renewables and clean transportation.

2022 marks our seventeenth year of offering innovative media, communications, and data services that provide real value to our clients.

**GREEN BUILDER**<sup>®</sup>

